



Wheeled Paver

VISION 5203-2

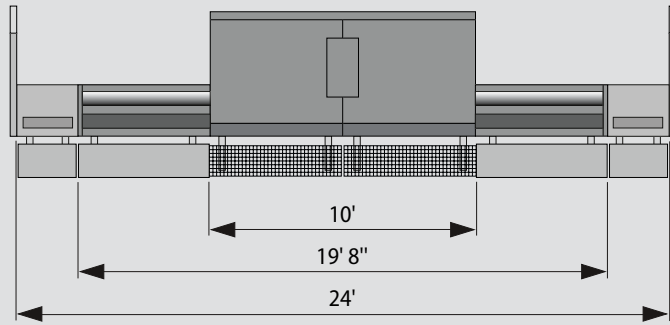


VISION 5203-2

Maximum Paving Width 25 ft.
Maximum Laydown Rate 1,300 tons/h
Transport Width 10 ft.

Screed Options

Example: VÖGELE VR 600-2 built up to maximum paving width



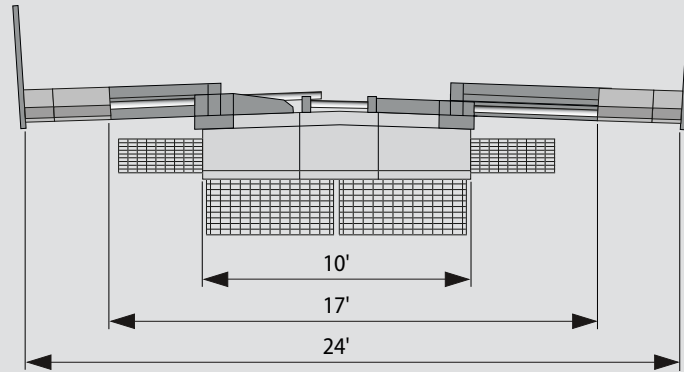
VÖGELE VR 600-2

Screed with rear-mounted extensions

Paving Widths

- Basic paving range from 10 ft. to 19 ft. 8 in.
- Maximum paving width with bolt-on extensions 24 ft.

Example: Carlson EZ III-1017 built up to maximum paving width



CARLSON EZ III-1017

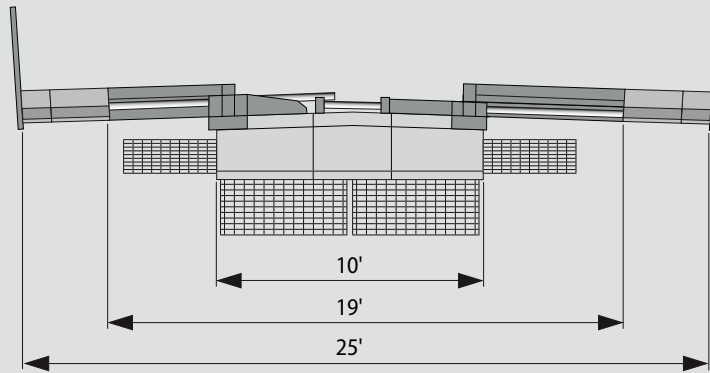
Screed with front-mounted extensions and no pre-strike off

Paving Widths

- Basic paving range from 10 ft. to 17 ft.
- Maximum paving width with bolt-on extensions 24 ft.*

*Optional bolt-on support recommended beyond 22 ft.

Example: Carlson EZ IV-1019 built up to maximum paving width

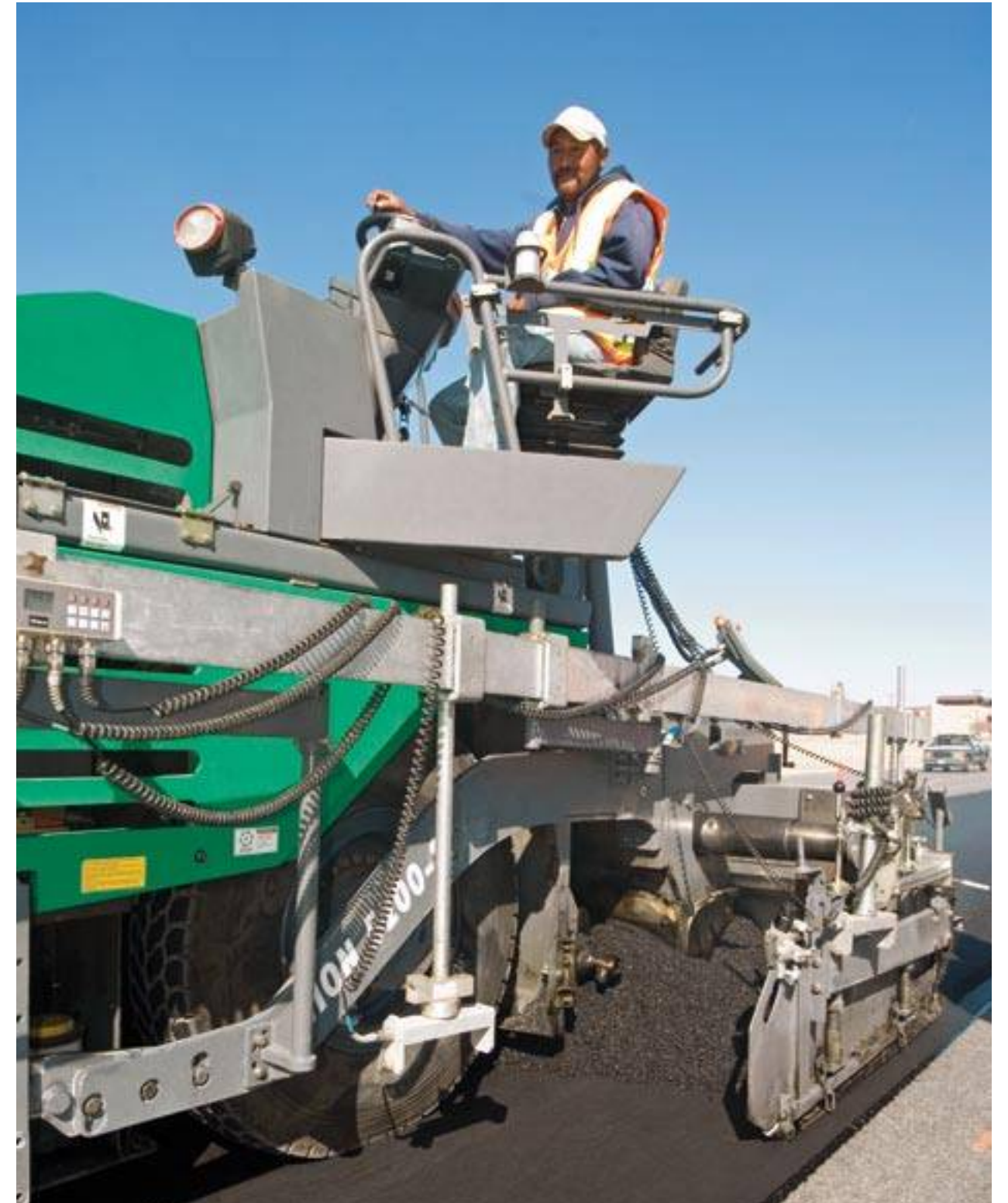


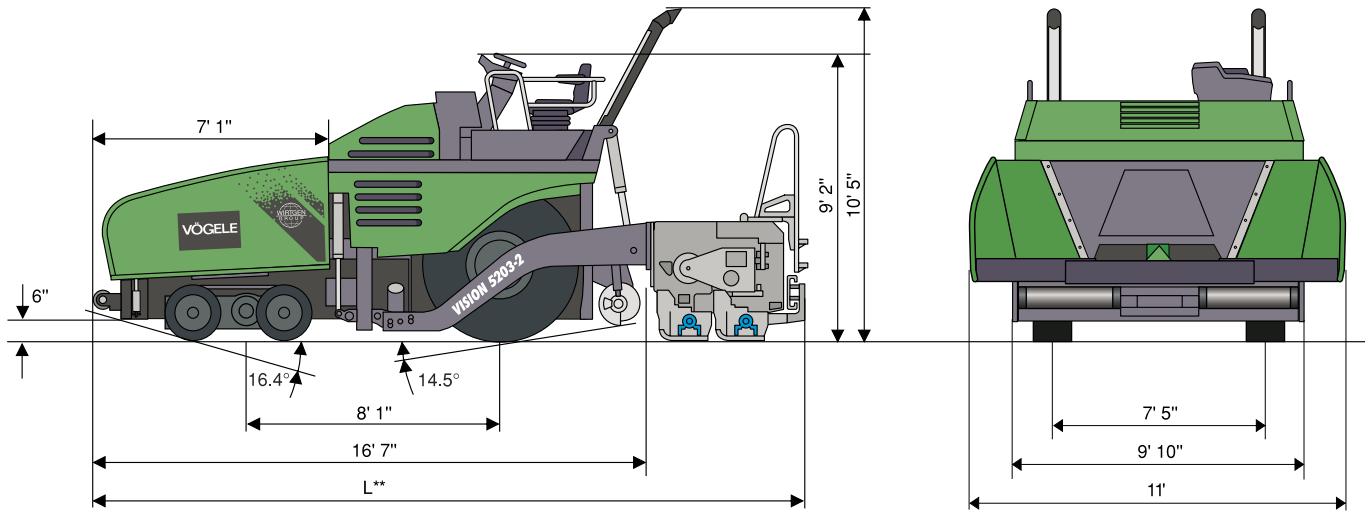
CARLSON EZ IV-1019

Screed with front-mounted extensions and no pre-strike off

Paving Widths

- Basic paving range from 10 ft. to 19 ft.
- Maximum paving width with bolt-on extensions 25 ft.





L** = Dependent on Screed Type (see Specification)

Power Unit

Engine: 6-cylinder CUMMINS diesel engine, liquid-cooled
 Type: QSB 6.7 C-240
 Output: Nominal: 240 h.p. at 2,000 rpm
 ECO Mode: 231 h.p. at 1,800 rpm
 Fuel Tank: 106 gal. (US)
 Electrical System: 24 V

Undercarriage

Front Wheels: 4, mounted on pivoting bogies
 Tire Equipment: solid tires
 Tire Size: 21.25 in. x 15.35 in.
 Rear Wheels: 2, with high-floatation tires
 Tire Size: 18.00 in. x 25 in.
 Drive: separate drive and electronic control provided for each driven wheel
 Standard: 2 powered rear wheels
 Option 1: 2 powered rear wheels and 2 powered front wheels
 Option 2: 2 powered rear wheels and 4 powered front wheels
 Speeds: Paving: up to 250 fpm, infinitely variable
 Travel: up to 12 mph, infinitely variable

Power Steering: hydraulic

Service Brake: amply-dimensioned multiple-disk brake operated by foot pedal
 Auxiliary Brake: hydrostatic
 Parking Brake: spring-loaded multiple-disk brake, maintenance-free

Material Hopper

Hopper Capacity: 240 cu. ft. (31,400 lbs.) including conveyor tunnel
 Width: 11 ft.
 Dump Height: 24 in. (bottom of material hopper)
 Push-Rollers: oscillating, displaceable forwards by 2 in., 4 in. and 6 in.

Conveyors and Augers

Conveyors: 2, with replaceable feeder bars, conveyor movement reversible for a short time
 Drive: separate hydraulic drive provided for each conveyor
 Speed: up to 102 fpm, infinitely variable (manual or automatic)

Augers: 2, with exchangeable auger flights, auger rotation reversible
 Diameter: 16 in.
 Drive: separate hydraulic drive provided for each auger
 Speed: up to 131 rpm, infinitely variable (manual or automatic)
 Auger Height: infinitely variable by 6 in., hydraulic
 Lubrication: Centralized lubrication system, electrically driven grease pump (optional)

Screed Options

VR 600-2: basic width 10 ft., infinitely variable range 10 ft. to 19 ft. 8 in. maximum width 24 ft.
 Carlson EZ III-1017: basic width 10 ft., infinitely variable range 10 ft. to 17 ft. maximum width 24 ft.*
 Carlson EZ IV-1019: basic width 10 ft., infinitely variable range 10 ft. to 19 ft. maximum width 25 ft.

Screed Version: V

Layer Thickness: up to 12 in.
 Screed Heating: electric by heating rods
 Power Supply: three-phase A.C. generator

Dimensions and Weights

Length: Tractor Unit and Screed in Transport Position
 - VR 600-2: 21 ft. 7 in.
 - Carlson EZ III-1017 / EZ IV-1019: 20 ft. 9 in.
 Weights: Tractor Unit: 32,405 lbs.
 - VR 600-2: 8,270 lbs.
 - Carlson EZ III-1017: 6,000 lbs.
 - Carlson EZ IV-1019: 7,000 lbs.

Optional Equipment

NIVELTRONIC Plus® for Automatic Grade and Slope Control (various grade sensors available). Two or four powered front wheels.
 Separate washdown tank. Xenon lamps for working lights.
 Automatic lubrication system. Hydraulic power tunnels. Truck hitch.
 For additional optional equipment, contact your VÖGELE representative.

Key: V = equipped with Vibration VR = Screed with Rear-Mounted Extensions

*Optional bolt-on support recommended beyond 22 ft. Specifications subject to change without notice.

© ErgoPlus, InLine Pave, NIVELTRONIC, NIVELTRONIC Plus, NAVITRONIC, NAVITRONIC Plus, RoadScan and V-TRONIC are registered Community Trademarks of JOSEPH VÖGELE AG, Ludwigshafen, Germany. PCC is a registered German Trademark of JOSEPH VÖGELE AG, Ludwigshafen, Germany. NIVELTRONIC Plus and NAVITRONIC Plus are trademarks registered in the US Patent and Trademark Office to JOSEPH VÖGELE AG, Ludwigshafen, Germany. Legally binding claims cannot be derived from written information or pictures contained in this brochure. Pictures may include optional extras. We reserve the right of technical or design alterations.

